



# DESIGN SYSTEMS & TECHNOLOGIES

NAVAL ARCHITECTURE & MARINE ENGINEERING SOFTWARE & SERVICES

AutoCAD2005

Page 1 of 1

## **NOTE WELL**

AutoCAD 2005 does not support Windows NT and older operating systems.

AutoCAD 2005 will run only under Windows2000 or WindowsXP.

Remember that ShipConstructor is an AutoCAD plug-in, and therefore it is the AutoCAD operating system requirements that must be satisfied.

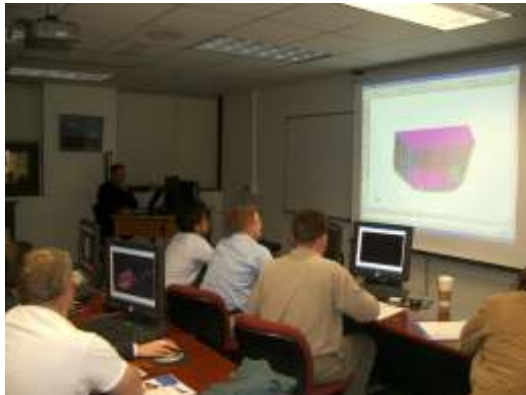


## New ShipConstructor Cooperations

### University of New Orleans to offer Courses based on ShipConstructor



The University of New Orleans's (UNO) School of Naval Architecture and Marine Engineering (NAME) has recently added ARL's ShipConstructor software to their program in an effort to further prepare their students for employment in today's collaborative work environment. The software will be used in NAME's 3170 Marine Design Calculations I course (3cr) to demonstrate and prepare the students for the uses and benefits of an Integrated Product Data Environment (IPDE).



ARL President Rolf G. Oetter presents to students at UNO

UNO looked at several software packages that are used by industry professionals today and quickly realized that in the U.S. Gulf of Mexico region ShipConstructor is outpacing its competitors by a significant margin. When asked why, the industry told UNO that learning ShipConstructor is almost seamless because of the software's roots in AutoCAD. The decision to teach ShipConstructor was a no-brainer for UNO.

The opening lecture was provided by Rolf Oetter, President of ARL. The students were awe-struck by ShipConstructor's wide range of capabilities - up to that point they had been working with individual programs with narrow sets of capabilities: CAD, fairing, powering, hydrostatics.

After the introduction Mr. Oetter assisted in securing Ronny Loupe from Bollinger Shipbuilding to continue the initial training until the University faculty was up to speed (five class periods).

"ShipConstructor experts from Avondale, Bender and Bollinger will guest lecture throughout the year," says Rolf Oetter. "This grants students direct access to contacts within the shipbuilding industry, and makes the course a very practical one."

For general information regarding UNO's School of NAME: [www.name.uno.edu](http://www.name.uno.edu). For curriculum information: [www.name.uno.edu/courses.html](http://www.name.uno.edu/courses.html).

### NSRP Project: ShipConstructor as Software Standard for US 2nd tier well underway

ShipConstructor was independently selected for the National Shipbuilding Research Program (NSRP) program based on its core functionality as an affordable 3-D product modeling software that integrates seamlessly with AutoCAD. The NSRP is standardizing the use of ShipConstructor as a common design package through active participation in the development of the software's specifications to meet the needs of both the first and second-tier shipyards.

On January 14 and 15, 2004 ARL hosted a major NSRP project team meeting. Representatives met in Victoria, BC to review the program's progress.

On schedule and on time seems to be the consensus reached at the quarterly meeting. The attending members were very pleased with the progress and development work being done at Albacore Research Ltd. Many of the requested enhancements were included in ARL's latest release last October when ShipConstructor2004 hit the market.

These included two new modules: **HVAC**, a full Heating, Ventilation and Air Conditioning module, and the **Penetrations module**, for defining and approving holes and cut-outs within the structural model. HVAC ducts are full-featured custom objects within AutoCAD, not just lines or solids, while the Penetrations module provides complete implementation and revision control, virtually eliminating costly mistakes. Both modules are fully integrated into the ShipConstructor suite and use the SQL Server product database to facilitate automatic report generation. Many further improvements and enhancements will be included in the May release of ShipConstructor2005.

It was unanimously decided that a "no-charge extension" be applied for to give ARL more time to develop additional features and to bring the project end inline with ShipConstructor's next release. All participating members are very excited about this project and are looking forward

#### Project Participants:

##### Shipyards:

Bender Shipbuilding & Repair Co. Inc.  
Northrop Grumman Ship Systems  
General Dynamics - Electric Boat  
Bollinger Shipyards, Inc.  
Manitowoc Marine Group  
VT Halter Marine, Inc.

##### Designers

Elliott Bay Design Group  
Alan C. McClure Associates, Inc.  
Murray & Associates, LLC  
Genoa Design International Ltd.

##### Software Developers

Albacore Research Ltd.  
Knowledge Based Systems, Inc.

## New ShipConstructor Cooperations

### Formation Design Systems becomes ShipConstructor Dealer worldwide



Albacore Research Ltd. (ARL) and Australia's Formation Design Systems (FDS) have announced that FDS has become an official dealer of ShipConstructor. Rolf G. Oetter, President of ARL, and Philip Christensen, Managing Director of FDS, say that this decision developed as a result of an already-established successful business relationship between the two companies.

Mr. Christensen explains, "Formation Design Systems currently supplies initial design software to a large number of naval architects and shipbuilders in the Asian and Australian regions. We believe the detailing capabilities of ShipConstructor will be an ideal additional tool to help improve productivity in the industry"

FDS will sell and support the ShipConstructor product range as ARL's dealer for Australia, New Zealand and South East Asia, and through the FDS dealer network world-wide. This will include providing training to naval architects and ship builders.

FDS and ARL have enjoyed a successful business alliance since 2003, when the two companies initiated the



Seminar participants enjoy a ShipConstructor presentation in Fremantle

interface between ARL's ShipConstructor and FDS' Maxsurf suite of naval and ship construction software with the objective to provide a complete end-to-end solution for ship design, detailing, and production to naval architects, designers, and shipyards.

On February 12, FDS and ARL hosted the Western Australia launch of ShipConstructor2004, the newest version of ARL's flagship software. The launch included a successful seminar that introduced Maxsurf users and other interested companies to the capabilities of the ShipConstructor suite. Over 50 people attended the seminar and interest in the partnership and its implications was extremely high.

For more information, visit [www.formsys.com](http://www.formsys.com).

### ARL Asia Pte. Ltd. Launched as ShipConstructor Representation in Asia



Albacore Research Ltd. (ARL) together with Dr. Oskar Lee announced in March that it has officially launched ARL Asia Pte Ltd (ARL Asia) as a solutions provider and training and technical center for ARL's ShipConstructor software in East Asia.

As Director of the newly formed ARL Asia, Dr. Lee will provide CAD/CAM system integration in the Asia Pacific region for all ShipConstructor clients, with the aim to ease co-ordination of sales and technical support in that region.



ARL President Rolf G. Oetter and ARL Asia Director Dr. Oskar Lee on a visit to Hyundai in July 2003

To better serve the local markets, ARL Asia is setting up a Asian dealer network, including to date eHYS, Inc. (Korea), S&I Technologies Asia (Singapore), Peripheral Solutions (Singapore), Aries Marine & Eng Services (UAE) and.

Seoul based **eHYS** is the key Autodesk reseller for Korea ([www.ehys.co.kr](http://www.ehys.co.kr)) and has been nominated by Autodesk Korea as the sole business partner in Korean marine industries.

**S&I Technologies Asia** (S&I) is a leading provider of world-class server systems, enterprise solutions, and service integration ([www.si-asia.com](http://www.si-asia.com)).

**Peripheral Solutions** (PSL) has been ARL's dealer in Singapore for years and now works closely together with ARL Asia.

**Aries Marine & Eng Services** is based in the United Arab Emirates and provides naval architecture and marine engineering services to the maritime industry.

ARL Asia will also be working closely with Australia-based Formation Design Systems and its East Asia representatives.

For more information, contact [oskarlee@post1.com](mailto:oskarlee@post1.com).

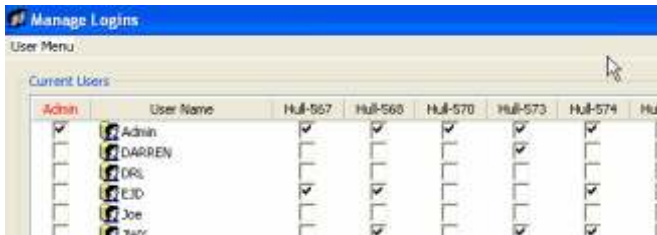
## Tips & Tricks

### ShipConstructor User Management

- by Rolf G. Oetter

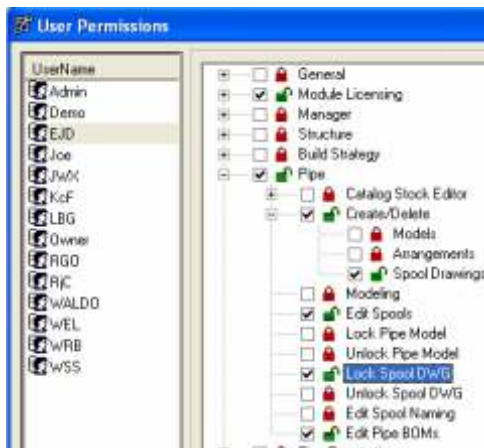
Whether you have 3 users or more than 100 users, managing user access to ShipConstructor projects ensures that your data is safe from prying eyes and from accidental damage.

User management starts at the project level and can be accessed through the ShipConstructor Administrator interface. With the ShipConstructor Administrator, you grant or deny individual users access to projects.



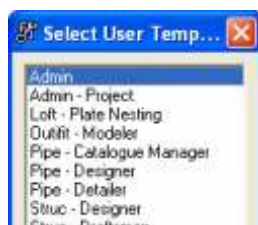
SC Administrator Project Access Permissions

In the next step you use the ShipConstructor Manager to tailor permissions for each user. There are virtually hundreds of options available. Fine tuning the permissions prevents accidental damage by inexperienced users and ensures that only qualified team members are able to change project critical parameters.



Manager Project Specific User Permissions

Managing a large number of users is immensely simplified with the user templates, which allows configuring typical types of users and then applying the correct settings with a single click.



Manager User Templates

## Upcoming Shows in 2004

### Apr 14 - 16, 2004 - Sea Japan

Tokyo, Japan, Booth # J-3  
with Autodesk Inc.

### Apr 26 - 30, 2004 - ITS

Miami, Florida, Booth # 1 & 2  
with Robert Allan Ltd.

### May 3 - 6, 2004 - OTC

Houston, Texas, USA, Booth # 4173  
with Autodesk Inc.

### Jun 25 - 28, 2004 - Shiport China

Shanghai, China, Booth # TBA  
with Autodesk Inc. and  
ARL Asia Ltd. Pte.

### Sep 28 - Oct 2, 2004 - SMM

Hamburg, Germany, Booth # TBA

### Sep 30 - Oct 1, 2004 - SNAME

Washington, USA, Booth # 220

### Nov 16 - 18, 2004 - METS

Amsterdam RAI, Amsterdam, The Netherlands  
Booth # TBA

### Dec 1 - 3, 2004 - WorkBoat Show

New Orleans, USA, Booth # 2155

## Upcoming Conferences/Seminars

Apr 14, 2004 - Sea Japan, Tokyo, Japan  
"ShipConstructor - Modernizing the Shipbuilding  
Process the Efficient Way"  
12:15h - 12:45h, Tokyo Big Sight Exhibition  
Center, East Hall 4, Tokyo, Japan

Jun 16, 2004 - Shipyard USA Conference,  
Washington DC, USA  
"Linking The Supply Chain Into The Product  
Model"  
Washington Marriott Hotel, Westend Ballroom,  
1221 22nd Street, N.W., Washington, D.C.

**ARL**  
**Albacore Research Ltd.**

[www.ShipConstructor.com](http://www.ShipConstructor.com)